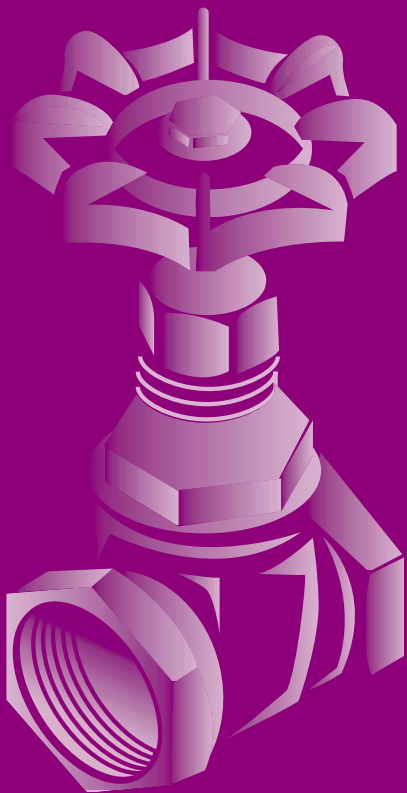


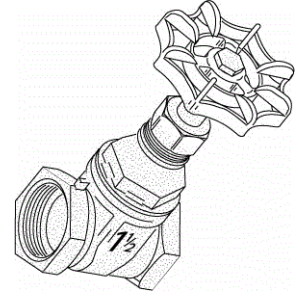
# *Rough Brass Valves & Stops*

---

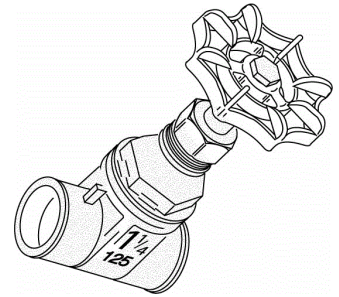


- a. Valves
  - i. Brass Gate Valves
  - ii. PVC Gate Valves
  - iii. Brass Ball Valves - Full Port
  - iv. Brass Ball Valves
  - v. Brass Swing Check Valves
  - vi. Brass Compression Stops and Stop and Waste Stops
  
- b. Tool - Tapes and Chemicals
  - i. Tool
  - ii. Tapes and Chemicals

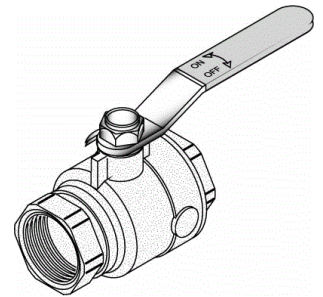
	Item	Description	Bulk Inner	Bulk Case	Wt.
<b>40006</b>	40003	1/4" IPT	0	120	0
<b>Brass Gate Valves Threaded IPT</b>	40004	3/8" IPT	0	120	0
	40005	1/2" IPT	0	120	32
- brass construction	40006	3/4" IPT	0	100	39
- full flow design	40007	1" IPT	0	60	26
- non-rising stem	40008	1-1/4" IPT	0	60	28
- heavy cast handle	40009	1 1/2" IPT	0	40	29
- 150 PSI	40010	2" IPT	0	24	36
- for steam, water, oil or gas	40011	2 1/2" IPT	0	0	0
	40012	3" IPT	0	6	29
	40013	4" IPT	0	4	24



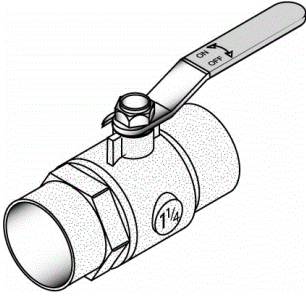
<b>40024</b>	40023	1/2" C x C	0	100	26
<b>Brass Gate Valves C x C</b>	40024	3/4" C x C	0	80	31
- brass construction	40025	1" C x C	0	60	27
- full flow design	40026	1 1/4" C x C	0	40	27
- non-rising stem	40027	1 1/2" C x C	0	30	30
- heavy cast handle	40028	2" C x C	0	0	0
- 150 PSI					
- for steam, water, oil or gas					

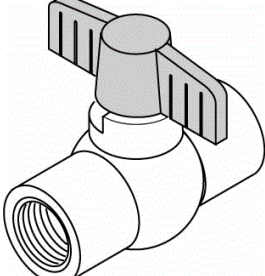


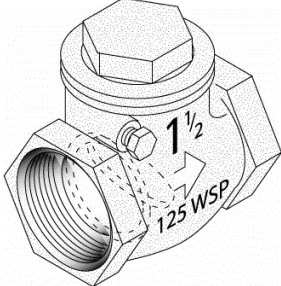
<b>40103</b>	40109	2 1/2" IPT	0	60	0
<b>Brass Ball Valves Threaded IPT</b>	40101	1/4" IPT	0	120	26
	40102	3/8" IPT	0	0	0
- full port	40103	1/2" IPT	0	100	50
- brass construction	40104	3/4" IPT	0	60	21
- 1/4 turn large lever handle	40105	1" IPT	0	40	49
- CP brass ball and teflon seals	40106	1 1/4" IPT	0	20	43
- 125 PSI Steam	40107	1 1/2" IPT	0	25	26
- 400 PSI	40108	2" IPT	0	20	26
- water, oil or gas	40110	3" IPT	0	60	0



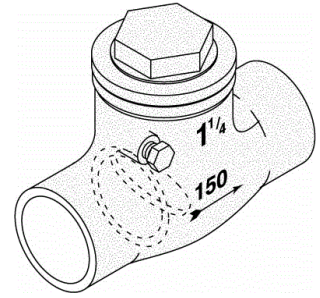
# Rough Brass Valves & Stops / Valves

	Item	Description	Bulk Inner	Bulk Case	Wt.
	40123	1/2" C x C	0	100	40 <b>40124</b>
	40124	3/4" C x C	0	48	17 <b>Brass Ball Valves C x C</b>
	40125	1" C x C	0	50	26 - full port
	40126	1 1/4" C x C	0	0	0 - brass construction
	40127	1 1/2" C x C	0	12	15 - 1/4 turn large lever handle
	40128	2" C x C	0	0	0 - CP brass ball and teflon seals - 125 PSI Steam - 400 PSI - water, oil or gas

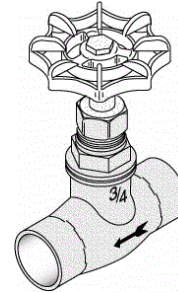
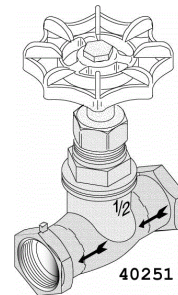
	40141	1/2" IPT	0	100	9 <b>40141</b>
	40142	3/4" IPT	0	100	13 <b>PVC Ball Valves</b>
	40151	1/2" solvent	0	100	9 - both threaded and solvent weld
	40152	3/4" solvent	0	100	28 - 150 PSI - cold water only

	40201	1/2" IPT	0	200	13 <b>40202</b>
	40202	3/4" IPT	0	500	8 <b>Brass Swing Check Valves</b>
	40203	1" IPT	0	0	0 <b>Threaded IPT</b>
	40204	1 1/4" IPT	0	0	0 - heavy brass construction
	40205	1 1/2" IPT	0	500	61 - used to prevent back flow
	40206	2" IPT	0	20	50 - 125 PSI
	40207	2 1/2" IPT	0	0	0 - water, oil or gas
	40208	3" IPT	0	0	0
	40209	4" IPT	0	0	0

	Item	Description	Bulk Inner	Bulk Case	Wt.
<b>40222</b>	40221	1/2" C x C	0	200	31
<b>Swing Check Valves C x C</b>	40222	3/4" C x C	0	100	26
<b>Brass</b>	40223	1" C x C	0	0	0
- heavy brass construction	40224	1 1/4" C x C	0	0	0
- used to prevent back flow	40225	1 1/2" C x C	0	0	0
- 125 PSI	40226	2" C x C	0	0	0
- water, oil or gas					



<b>40251</b>	40251	1/2" IPT	0	72	16
<b>Compression Stop/Globe Valve</b>	40252	3/4" IPT	0	72	19
	40255	1/2" C x C	0	72	27
- heavy brass construction	40256	3/4" C x C	0	72	0
- non-rising stem					
- 150 PSI					
- water, oil or gas					



<b>40261</b>	40261	1/2" IPT	0	72	21
<b>Compression Stop &amp; Waste/Globe Valve</b>	40262	3/4" IPT	0	72	21
	40265	1/2" C x C	0	0	0
- heavy brass construction	40266	3/4" C x C	0	0	0
- non-rising stem					
- 125 PSI					
- water, oil or gas					

